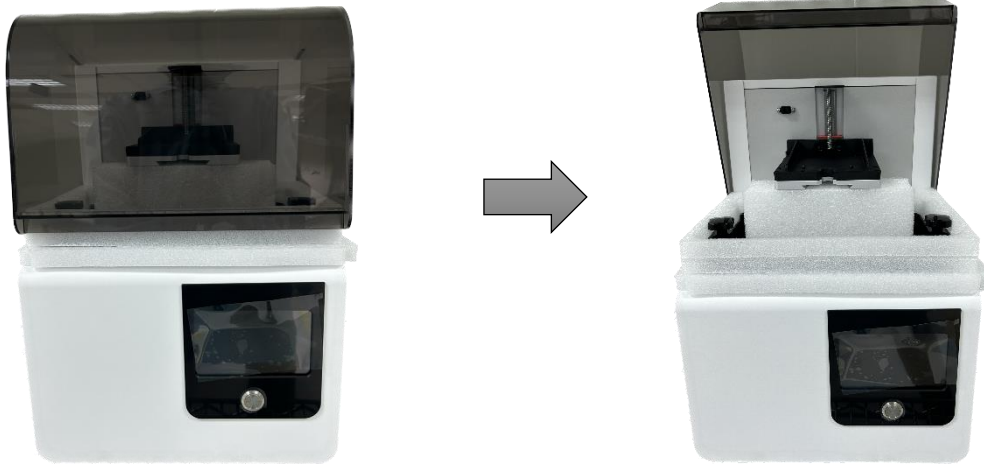
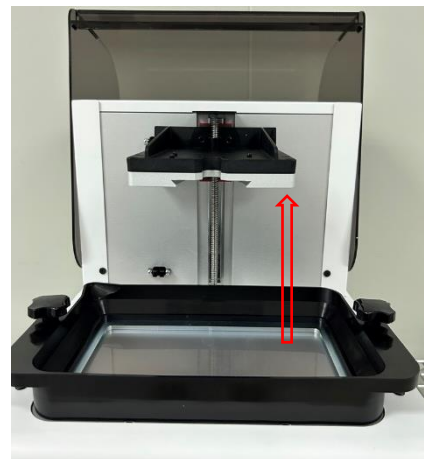


1. Assembly instruction

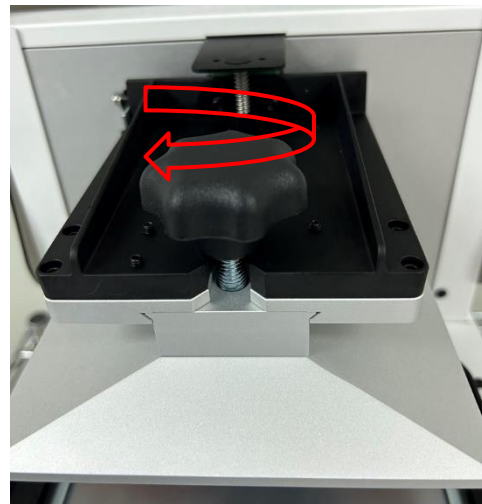
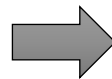
Step 1: Unpack and take out all the accessories. Then open the lid and remove the foam.



Step 2: Plug in the power and turn on the machine. The Z axis will automatically go into the top position.

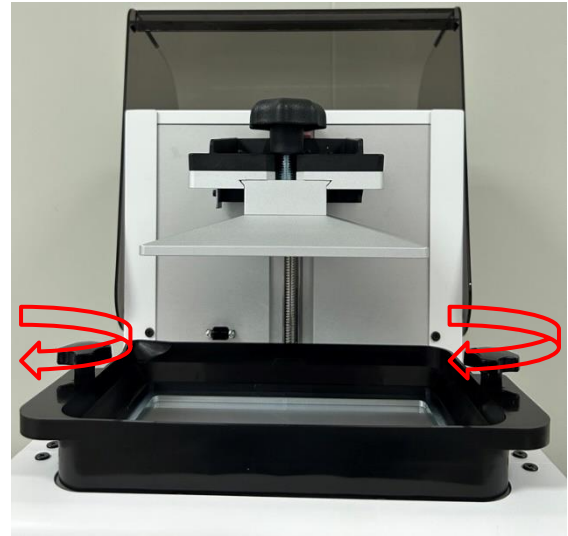
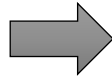
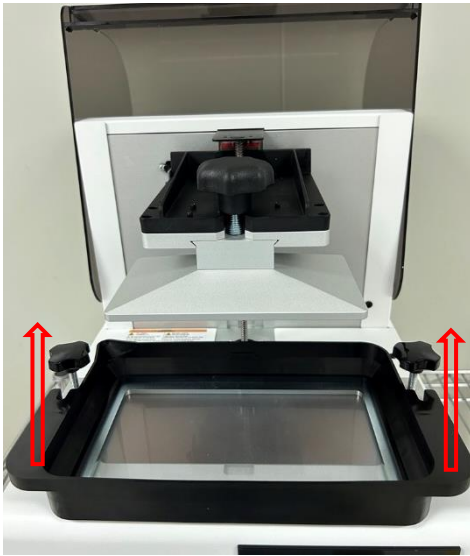


Step 3: Install and secure the picker module.



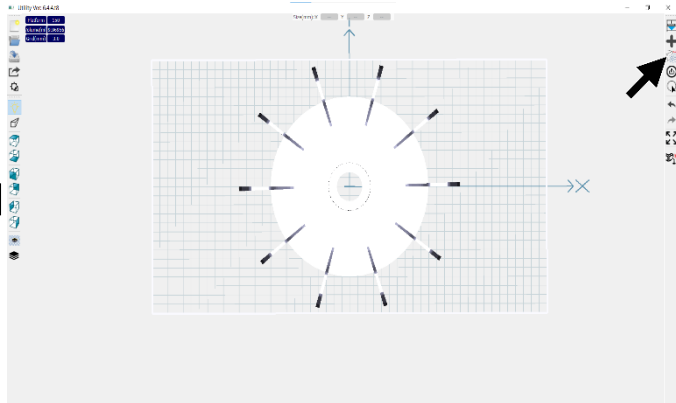
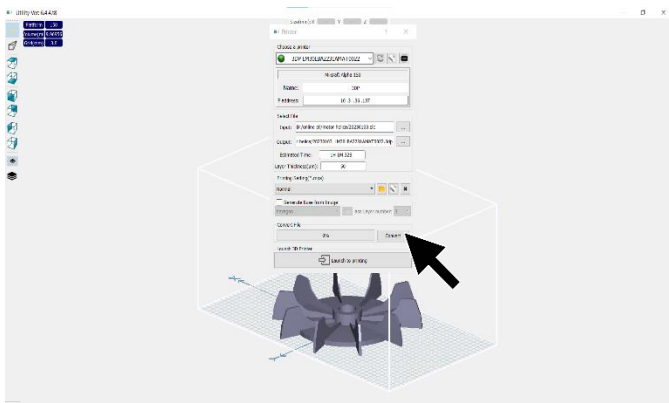
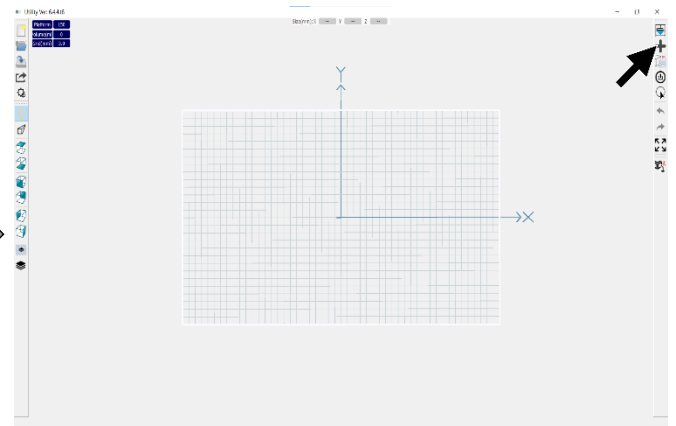
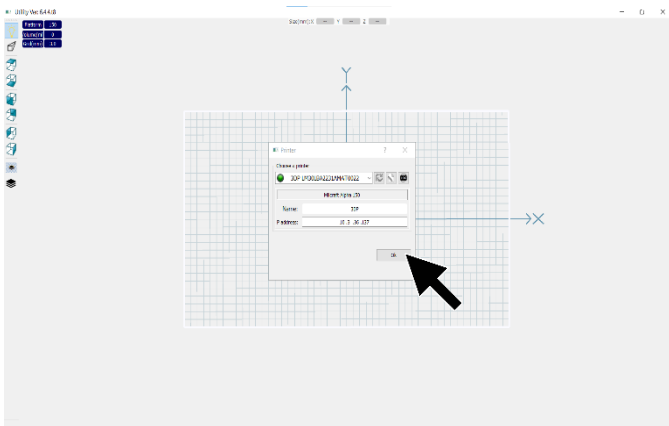
2. Install resin vat

Put the resin vat and tight the screws as shown below.



3. Conversion to 3DP

Open the utility software and connect the printer. Then select the printing model and slice, after that transfer it into a .3dp file.



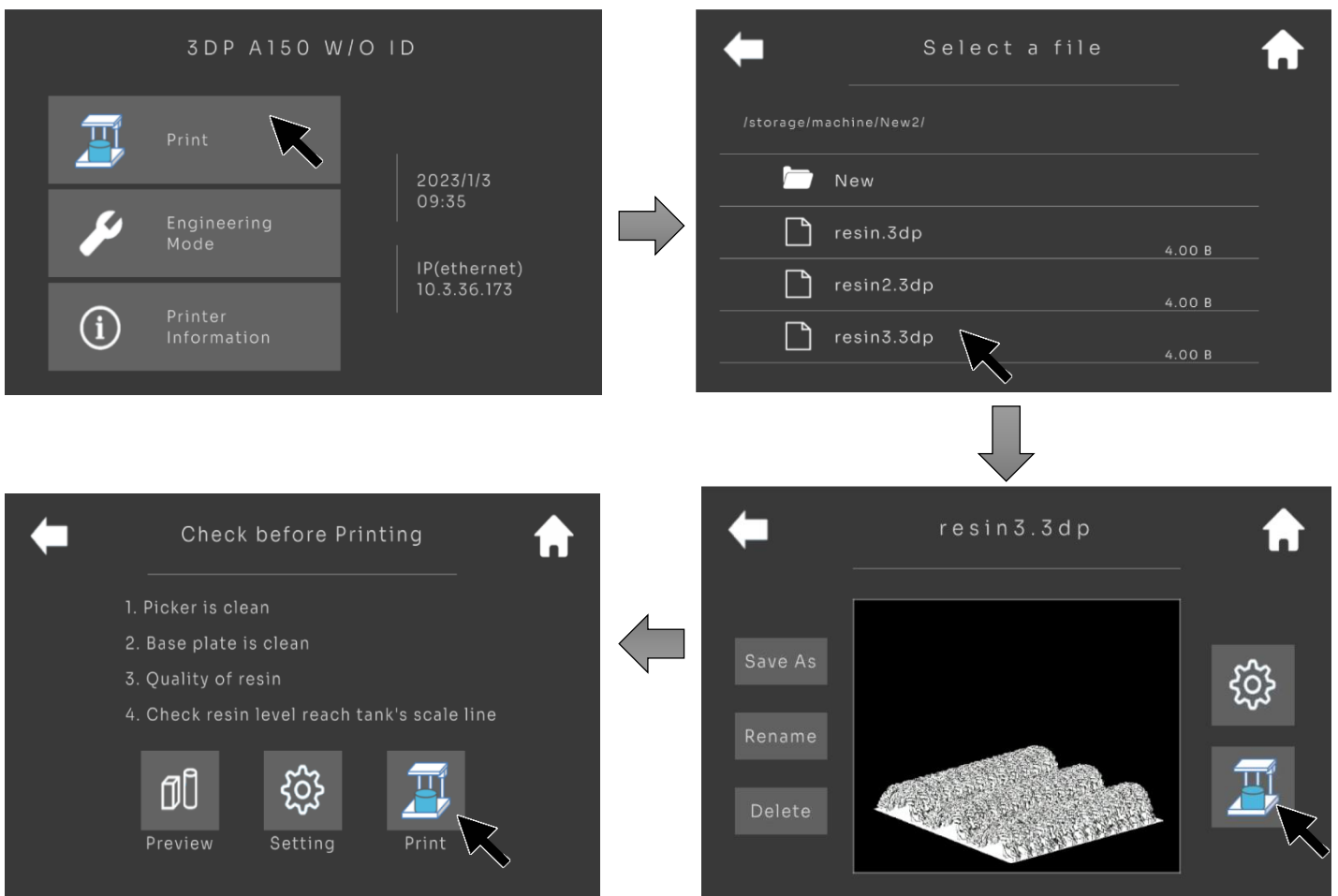
4. Printing Process

Pour the resin into the vat, the resin cannot exceed the vat's maximum scale.



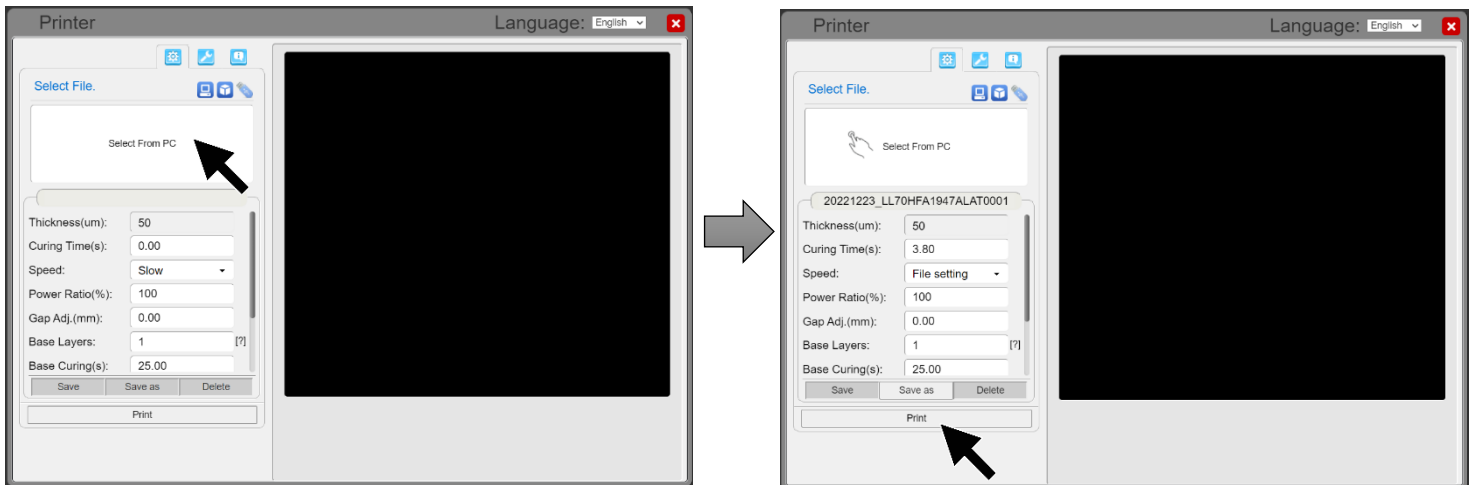
Process 1: Through USB or Machine.

Connect the USB to the machine and select the sliced file for print.



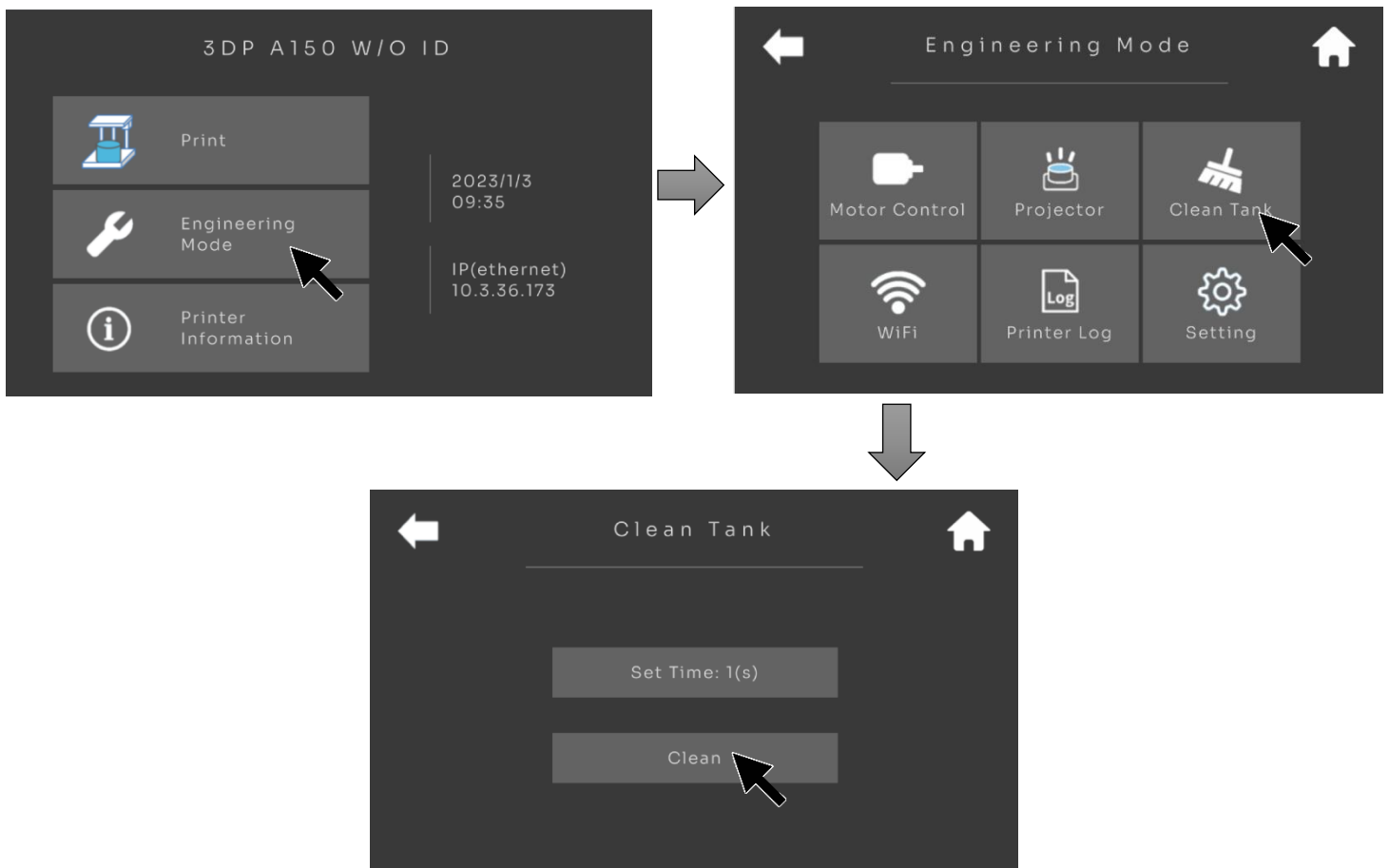
Process 2: Through PC

Connect the printer to the PC through a Wireless or Ethernet cable. Then select the sliced file, give the printing parameter and start printing.



5. Resin tank cleaning.

After printing, if the print fails, some cure resin is left in the vat.
To remove the cured resin, use clean tank process.



6. Attention

- ❖ Make sure you wear a mask and gloves to avoid direct skin contact with resin.
- ❖ Place Miicraft Alpha 3D Printer in a dry place and keep a safe distance from fire or water.
- ❖ Do not disassemble Miicraft Alpha 3D Printer.
- ❖ In case of any emergency, immediately cut off the power of Miicraft Alpha 3D Printer and contact technical support.
- ❖ Miicraft support team is always ready to help you with any problem you may have with your Alpha 3D Printer